

Quick start

1. Connect your Wagons hydraulics and power cable.
2. Check you're on the Wi-Fi and refresh your mirror page.
3. Fill Wagon and travel to working area.
4. Select the desired speed setting for the product you're feeding
5. Activate hydraulics and increase tractor revs to 1000 rpm
6. Travel around working area or feed pad until empty

Contents

1. Set up and getting started

- Turning on the machine
- Connect to 12v power supply
- Plug in your main pressure line
- Plug in your return line

2. Screen layout

- Welcome greeting
- Main screen - Loading
- Main screen - working
- Menu screen – For SAM technicians only

3. Screen buttons / layout

- Wifi
- Zero
- Slower
- Faster
- Menu
- Power Indicator

4. Screen Operation - Wi-Fi

- Establish wireless connection
- QR scan on the Wi-Fi network
- Wi-Fi Check
- Mirror screen

5. Screen Operation Wi-Fi

- Slower Button
- Faster Button
- Pressure Indicator
- Floor speed

1. Set up and getting started

- **Turn the wagon on**

There is a manual on/off button on the RH side of the control box.



- **Connect to 12v power supply**

Connect the light cable to your tractor. This will charge the internal battery (note some tractors need the lights to be on for this to supply voltage).

- **Plug in your main pressure line**

eWagons require at least 60 litres of oil. If you have more flow available and you want to increase the machine output please call SAM for advice.



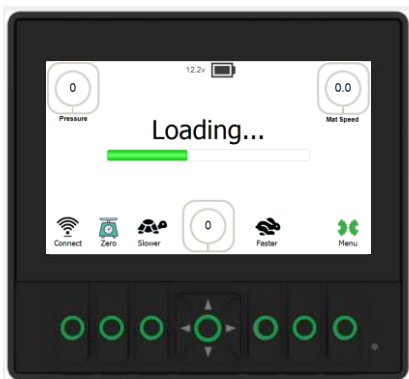
- **Plug in your return line**

This needs to be in the same bank for reversing the floor.

2. Screen layout

- **Welcome greeting**

When you turn your machine on, the screen will power up and you will see the SAM welcome.

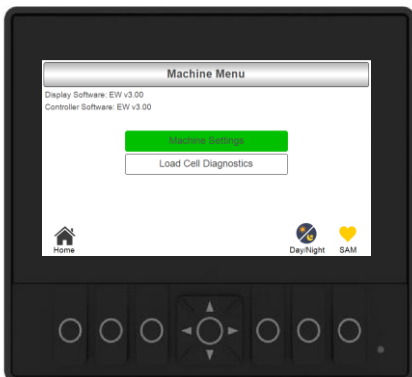
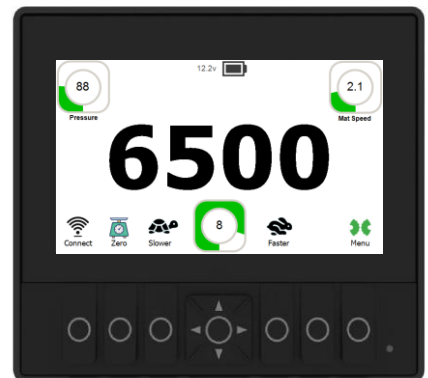


- **Main screen - Loading**

Your main screen is where you spend most of your time. You have all the information you need to carry out accurate and efficient feeding. The scales will load up and the Wi-Fi will stop flashing once connection is available.

- **Main screen - working**

This screen is designed to show you how much work your machine is doing, and to increase or decrease the load to your requirements by changing the speed pressure set point.



- **Menu – SAM technicians**

This screen is where we store all the factory settings for the eWagon including load cell diagnostics. Please call SAM HQ if you require access here.

Note: going into this area and changing settings could void your warranty.

3. Screen buttons / layout



Connect

Establishes wireless connection to any Wi-Fi enabled device.



Zero

Zeros the scales in the machine.



Slower

Reduces the load you are applying to the teaser bars and slows the feed supply.



Faster

Increases the load you are applying the teaser bars and increases the feed supply.



Menu

SAM Tech menu, day/night modes, settings, and loadcell diagnostics.

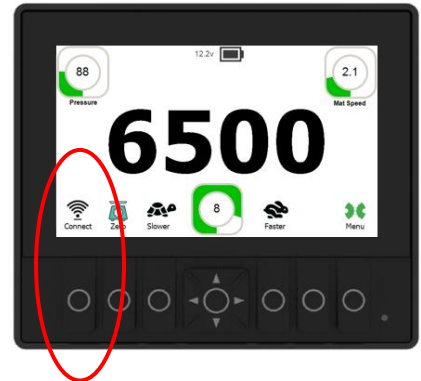


Voltage indicator

4. Screen Operation - Wi-Fi

- **Establishes wireless connection**

The screen has inbuilt instructions for connecting devices. Any device that can connect to Wi-Fi can mirror this screen. First you click the Wi-Fi button to access the first step.

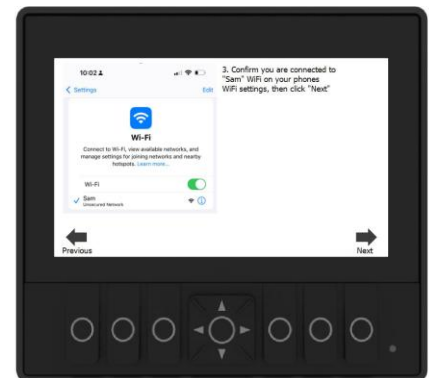


- **QR scan on the Wi-Fi network**

Most smart phones have the ability to use the phones camera to scan the QR code on this screen (note: you are not actually taking a photo). If you want to connect to the Wi-Fi manually, just go to your devices Wi-Fi settings and look for the network "SAM" and hit connect.

- **Wi-Fi Check**

All devices are different, so it is worth checking that you are connected to the Wi-Fi. Devices being used to run this machine won't be able to be used to access the internet at the same time. So, if you prefer, ask SAM about supplying a dedicated device for your operation. Tip - have auto reconnect set up on your device.



- **Mirror screen**

This next QR scan will pop up a "URL" link. Click the pop up and it will take you to a page that mirrors the screen. Note if you go further than 100m away you will have to refresh this page when you are back within the Wi-Fi range.

5. Screen Operation

- **Slower Button**

The slower button function is designed to reduce the feed volume exiting your eWagon. The computer is lowering the pressure set point on the teaser bars. You will observe the pressure indicator reduce and the main floor will run slower.



- **Faster Button**

The faster button function is designed to increase the feed volume exiting your eWagon. The computer is increasing the pressure set point on the teaser bars. You will observe the pressure indicator increase and the main floor will run faster.

- **Pressure Indicator**

This is showing the pressure you are loading on to the teaser bars in real time. The faster / slower buttons effect this directly, and the machine maintains this pressure by modulating the main floor speed automatically.



- **Floor speed**

The machine controls the main floor speed automatically to maintain the pressure against the teaser bars. Typically the floor speed will be constant until the load gets low. Then the pressure drops, so the floor will speed up to empty the last of the feed a lot faster than traditional machines.